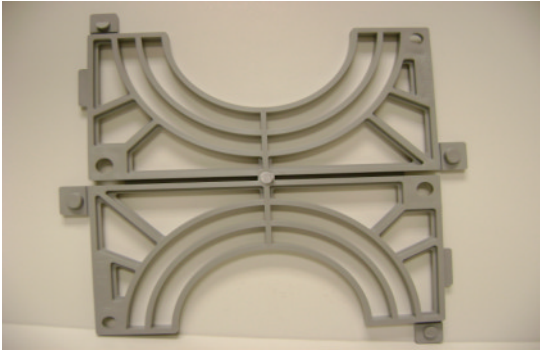


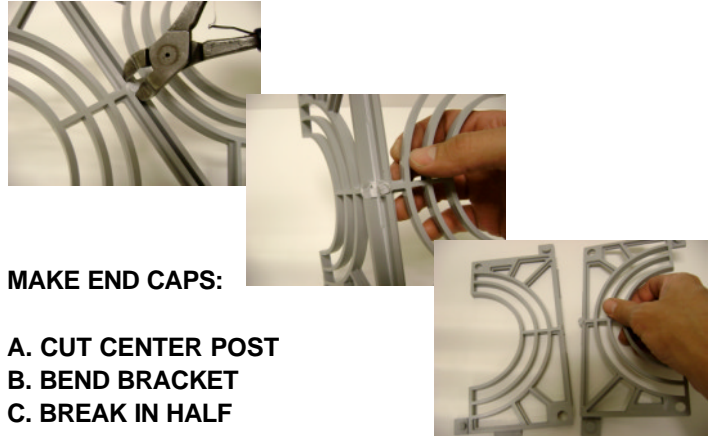
PANEL ASSEMBLY FOR B456 BRACKET

B456 BRACKET



THE BRACKET HAS 8" CENTER TO CENTER SPACING AND IS READY FOR 4" TERMINATORS. THE BRACKET CAN BE CUT FOR USE WITH 5" AND 6" TERMINATORS.

STEP 1

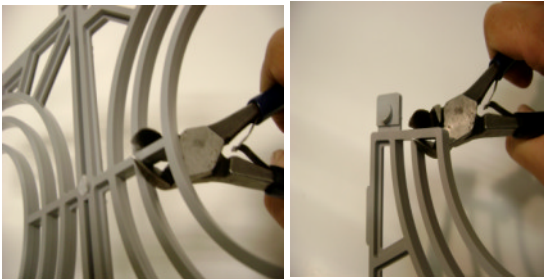


MAKE END CAPS:

- A. CUT CENTER POST
- B. BEND BRACKET
- C. BREAK IN HALF

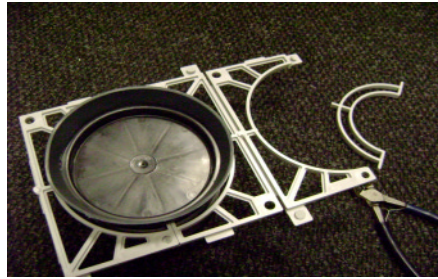
THESE WILL BE USED ON THE ENDS OF THE PANEL STRIPS.

STEP 2



CUT SECOND RING IN FROM CENTER FOR 5" TERMINATORS AND THIRD RING FOR 6" TERMINATORS. CUT ALL THREE SECTIONS.

STEP 3



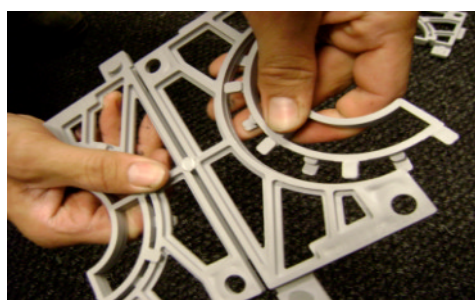
USING ONE FULL UNCUT B456 BRACKET AND ONE END CAP, SNAP THEM TOGETHER AROUND THE 5" TERMINATOR. THIS PHOTO SHOWS A FULL BRACKET CUT FOR 5" AND 6" TERMINATORS.

STEP 4



ADD ANOTHER TERMINATOR AND THE OTHER END CAP FROM THE CUT B456 BRACKET. THIS PANEL IS READY FOR YOUR FORM.

OPTIONS



AS WITH THE B400 BRACKET, THE B230 BRACKET FITS TO THE B456 BRACKET. THIS LETS YOU ADD 2" AND 3" TERMINATORS TO YOUR PANEL.

For more detail see B400 and B230 assembly instructions.