



BOWCO Manhole Step INSTALLATION INSTRUCTIONS

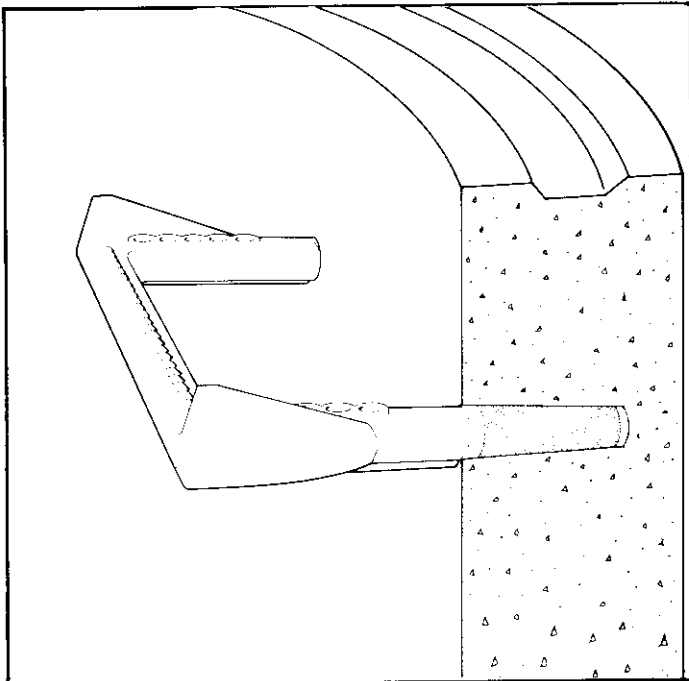
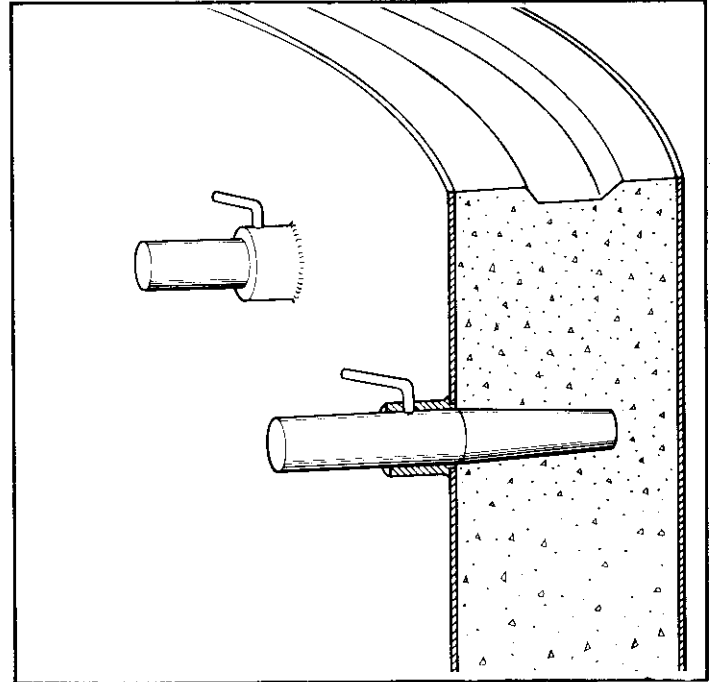
Recommendations for: TAPERED PIN PREFORMED HOLES for DRIVE FIT STEP

Manufacturers with equipment designed for use with tapered steel or plastic pins through the inside form provide the most economical way to use the BOWCO Step.

Hand set tapered pins require a collar with a locking key welded flush with the inner form. Steel pins require a light coating of form oil for each concrete pour, though plastic pins DO NOT require additional agents. Mechanical gang pin setting equipment is also available. Names of suppliers will be provided upon request.

After the concrete is poured the tapered pins are removed from the forms, leaving a pre-cast tapered hole. When the inner and outer forms are removed a series of molded pre-cast concrete tapered holes remain to accept the BOWCO Step.

Step installation requires only a 4 pound rubber mallet. Drive the step to its full insertion depth to the stop ridge on the bottom side of the step. Only the flat surface of the step shows.



Simple Rules:

- Pre-cast proper size holes.
 - Cure concrete to 3,000 PSI strength
 - Drive step to full depth with only the flat surface showing.
 - Use form lubricants for steel pins ONLY.
 - BOWCO Step installation requires only one pin size and length.
(Contact your BOWCO representative for proper pin size)
- CAUTION: DO NOT use grease on steel pins.
Plastic Pins DO NOT require lubricants.

BOWCO Industries, Inc.

(503) 653-9405 • (888) 232-9991